

4

3

2

1

B

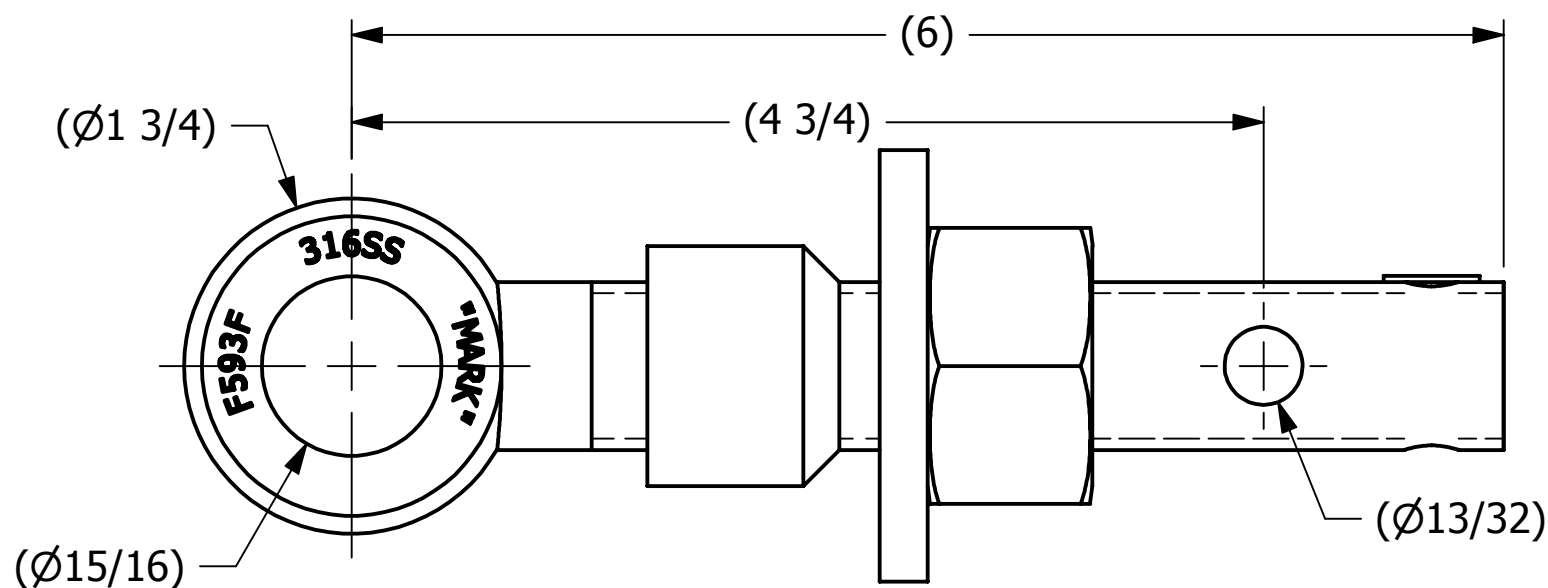
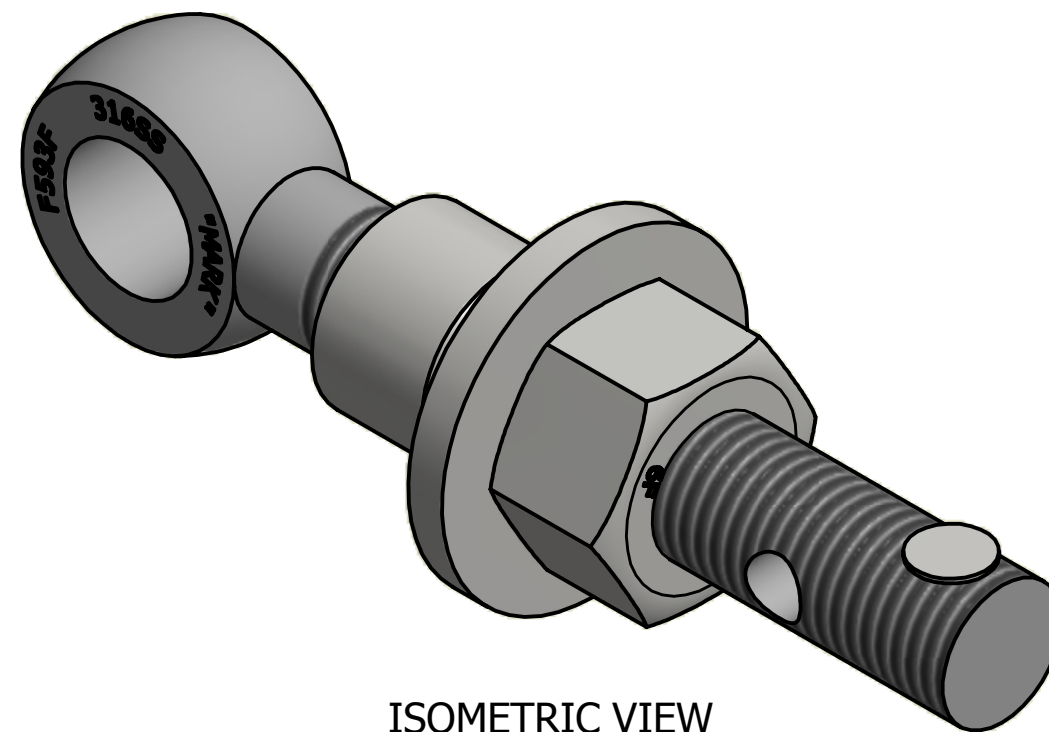
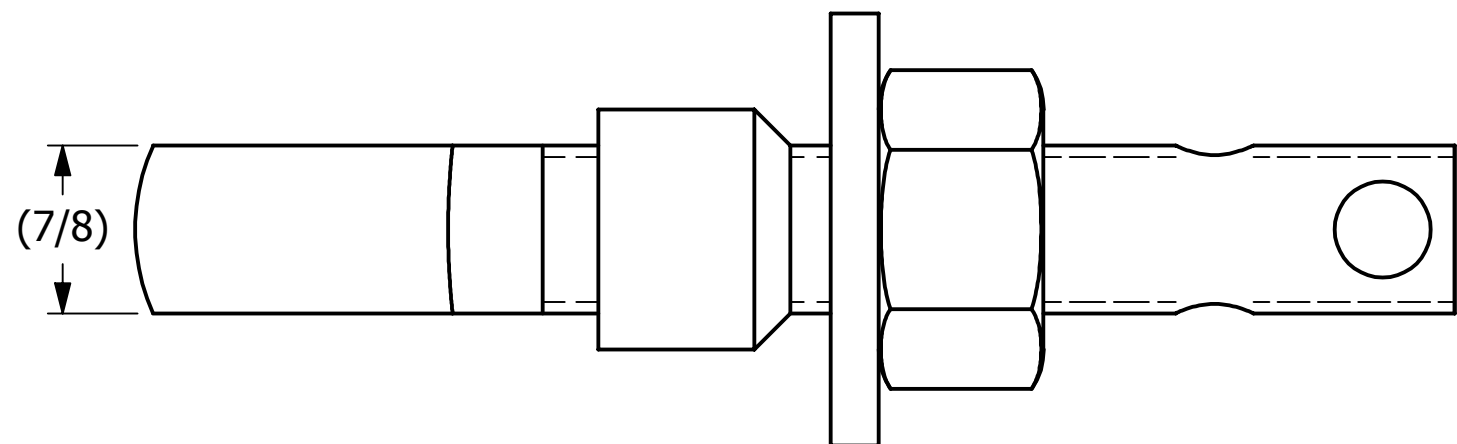
B

A

A

SALES DRAWING

SALES DRAWING



REV	BY	DATE	DESCRIPTION
C	JG	1-26-16	UPDATED TITLE BLOCK
B	WEB	9-13-12	REPLACED WASH78S6 W/ WAS78S4T
A	CHL	5-14-10	NEW PART ADDED TO SYSTEM

NOTE:
 JET LUBE (PFPE GREASE) IS APPLIED TO WORKING THREAD AREA,
 THE BOTTOM FACE OF THE NUT, AND THE TOP FACE OF THE
 WASHER.

UNLESS OTHERWISE SPECIFIED DIMENSIONAL TOLERANCES FRACTIONAL: ±1/16 X.XX: ±.03 X.XXX: ±.015 ANGULAR: ±1° DEBURR ALL SHARP EDGES. ALL MACHINED SURFACES TO HAVE A 125 RMS FINISH UNLESS NOTED OTHERWISE. THIRD ANGLE PROJECTION	DRAWN BY:	CHL
	CHECKED BY:	VD
	PROTOTYPE BY:	CHL
	PROTOTYPE DATE:	12/11/2009
	APPROVED FOR PRODUCTION BY:	VD
	PRODUCTION DATE:	5/14/2010

SALCO PRODUCTS, INC.		
PART NAME: EYEBOLT ASSEMBLY 7/8"X6"		
MATERIAL: STAINLESS STEEL		
PROJECT #: WAG0753	SHEET #: 1 OF 1	SCALE: 1:1
DRAWING #: B27830	PART #: EB786XHFTAS6TC3L	

THIS PRINT, PROPERTY OF SALCO PRODUCTS INC., CONTAINS PROPRIETARY INFORMATION AND MUST NOT BE COPIED, REPRODUCED, OR USED DETRIMENTALLY TO OUR INTEREST.